

# COBRA 352 MA

The manual circular sawing machine ideal for cutting aluminium that has revolutionized the angle cut



- MANUAL SAW
- CIRCULAR BLADE
- CUTTING FROM  $-45^{\circ}$  TO  $+45^{\circ}$

## CUTTING RANGE

	○	□	▭	■
0° / mm	120	105	180 x 70	80
+45° / mm	110	95	135 x 60	55
-45° / mm	120	100	135 x 60	55

Max. open vice 180 mm

## PERFORMANCE CHARACTERISTICS

Blade size	HM - 350 x 32 x 3.4 mm
Blade speed	1700/3400 rpm
Blade motor	1.5 / 2.2 Kw

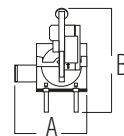
Capacity of coolant tank 10 L

Total input power 2.2 Kw

## WEIGHT AND DIMENSIONS

Height of working table 920 mm

Weight 160 Kg



A = 850 mm

B = 1230 mm



1 = 700 mm

2 = 1000 mm

3 = 1700 mm